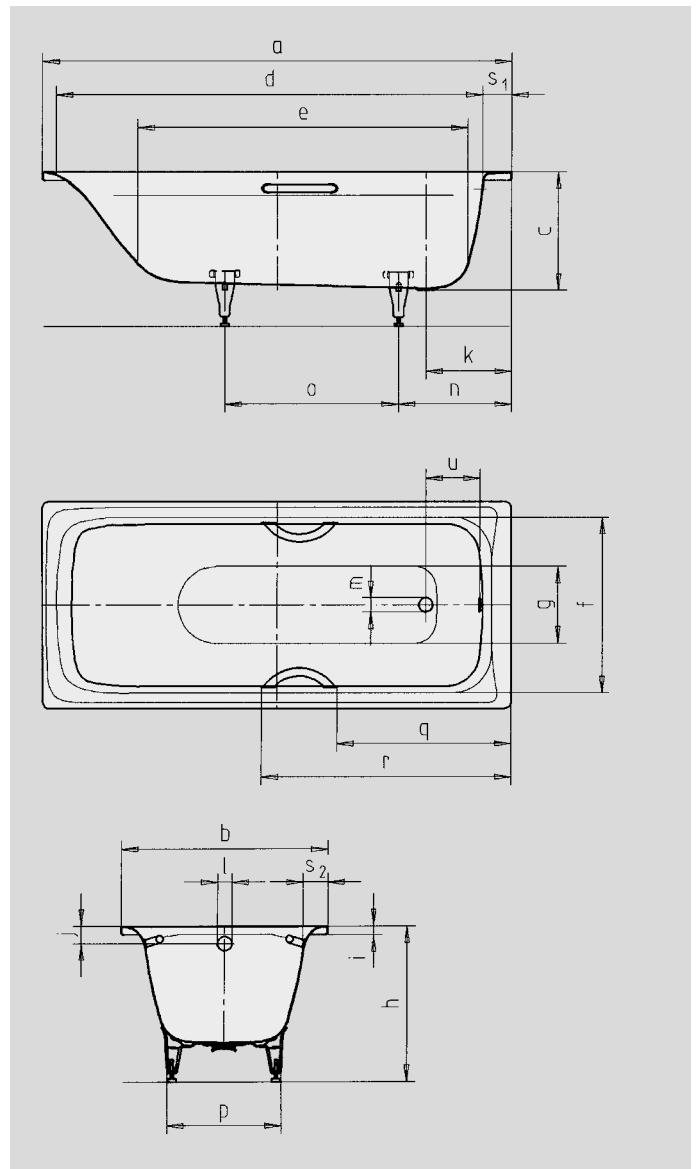


# SANILUX SANILUX STAR

- especially comfortable thanks to rounded area for neck
- one-seater bath with waste at foot end
- classic four-cornered model
- made of Kaldewei steel enamel 3,5 mm
- also available with grips/handles



Similar illustration



Model No.		342 / 343
External length	a	1700 mm
External width	b	750 mm
Depth	c	430 mm
Internal length (top)	d	1545 mm
<b>Internal length (bottom)</b>	<b>e</b>	<b>1150 mm</b>
Internal width (top)	f	585 mm
Internal width (bottom)	g	328 mm
Height with feet	h	535-555 mm
Height of rim	i	32 mm
Distance top edge to centre of overflow hole	j	63 mm
Distance bath edge to centre of drain hole	k	310 mm
Diameter of overflow hole	l	52 mm
Diameter of drain hole	m	52 mm
Distance foot end of bath edge to centre of foot	n	410 mm
Distance between the feet	o	630 mm
Max. width of feet	p	430 mm
Distance bath edge (foot end) to where grip/handle starts (Mod. 343)	q	632 mm
Distance bath edge (foot end) to where grip/handle ends (Mod. 343)	r	905 mm
Width of rim (foot end; lengthwise)	s <sub>1</sub> ; s <sub>2</sub>	100; 58 mm
Distance between centre holes	u	200 mm
Water volume** in litres		124
Weight of the enamelled bath in kg		49
Anti-slip		Ø 288 mm
Full anti-slip		600 x 220 mm

Subject to technical alterations, tolerances and errors. Similar illustration.  
\*\* 70 litres displacement on average.

**KALDEWEI**