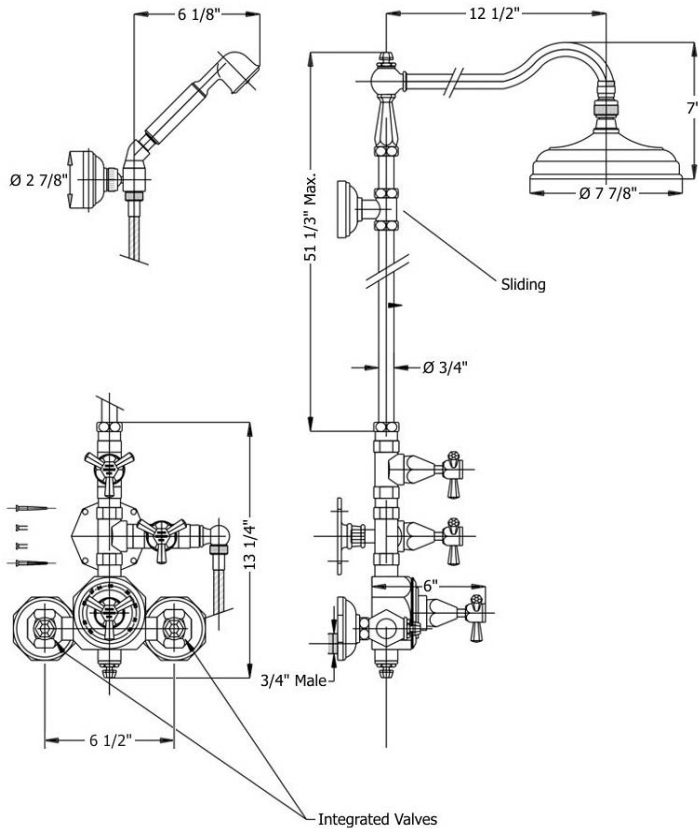


3702 - 'Monarque' Exposed Thermostatic Shower



Part#	Description
21	1" OD X 1" OD Socket Adapter
22	3/4" Thermostat Cartridge
23	Finished Dial Plate
24	Thermostat Stop Plate
25	Screw
26	Swivel Bushing Fitting
27	Swivel Bushing
28	Square Tube
29	Compression Ring
30	Brass Scold Stop Button Plate
31	Red Button Assembly
32	Set Screw
33	Set Screw
34	Scold Stop Stem
35	Scold Stop Body
36	Thermostat Control Stem
37	Wall Mount Plate Connector
38	Main Body Wall Mount Plate
39	Wall Mount Screws
40	Main Pipe Connector
41	3/4" - 1/2" Reducer
42	Male 3/4" - Male 1/2" Reducer
43	Fiber Washer
44	Aerator Washer
45	3/4" Nut
46	Main Support Bar
47	Monarque Cartridge Upper Body
48	O-Ring
49	Monarque Shower Arm
50	Finished Washer
51	Monarque Top Knob
52	Rubber Washer
53	Head Swivel Kit
54	Shower Head
55	Wall Mounting Plate
56	Escutcheon Mount Screws
57	Mounting Screw Kit
58	Escutcheon
59	Monarque Bar Support
60	Threaded Stem
61	1/2" Washer
62	Hand Shower W/O Handle
62-65	H/S Kit F/Pompadour Without Elbow
63	Metal Ring F/Hand Shower
64	Finished Hand Shower Handle
65	Metal Ring F/Hand Shower

Technical Information	Part#	Description
<ul style="list-style-type: none"> 8" Rose Handspray Flow Rate Approx. 3.0 GPM 8" Showerhead Flow Rate Approx. 3.0 GPM Flow Rates Are Based On Use Of 3/4" Supply Lines And Will Vary Depending On Water Pressure Integral Shutoff Valves 3/4" Connections 19 GPM @ 60 PSI (4 Bars) 5' Hand Shower Hose Available finishes are Polished Chrome(48), Solibrass(49), Polished Brass(55), Polished Nickel(56), Brushed Nickel(57), Satin Nickel(60), and Weathered Brass(70) Please see cleaning instructions for finish care and maintenance information 	04	Valve Body
	05	Cartridge For 3/4"
	06	Monarque Cartridge
	07	Handle Stem
	08	Monarque Horizontal Handle Stem
	09	Monarque Handle Center
	10	Handle Screw
	11	Monarque Indice Insert
	12	Rubber O-ring
	13	Ceramic Indice
	14	Brass Thread Connector
	15	Thermostat Main Body
	16	Nut
	17	Escutcheon Connector
	18	3/4" Washer
19	Monarque Wall Escutcheon	
20	3/4" Male-1/2" Male Adapter	

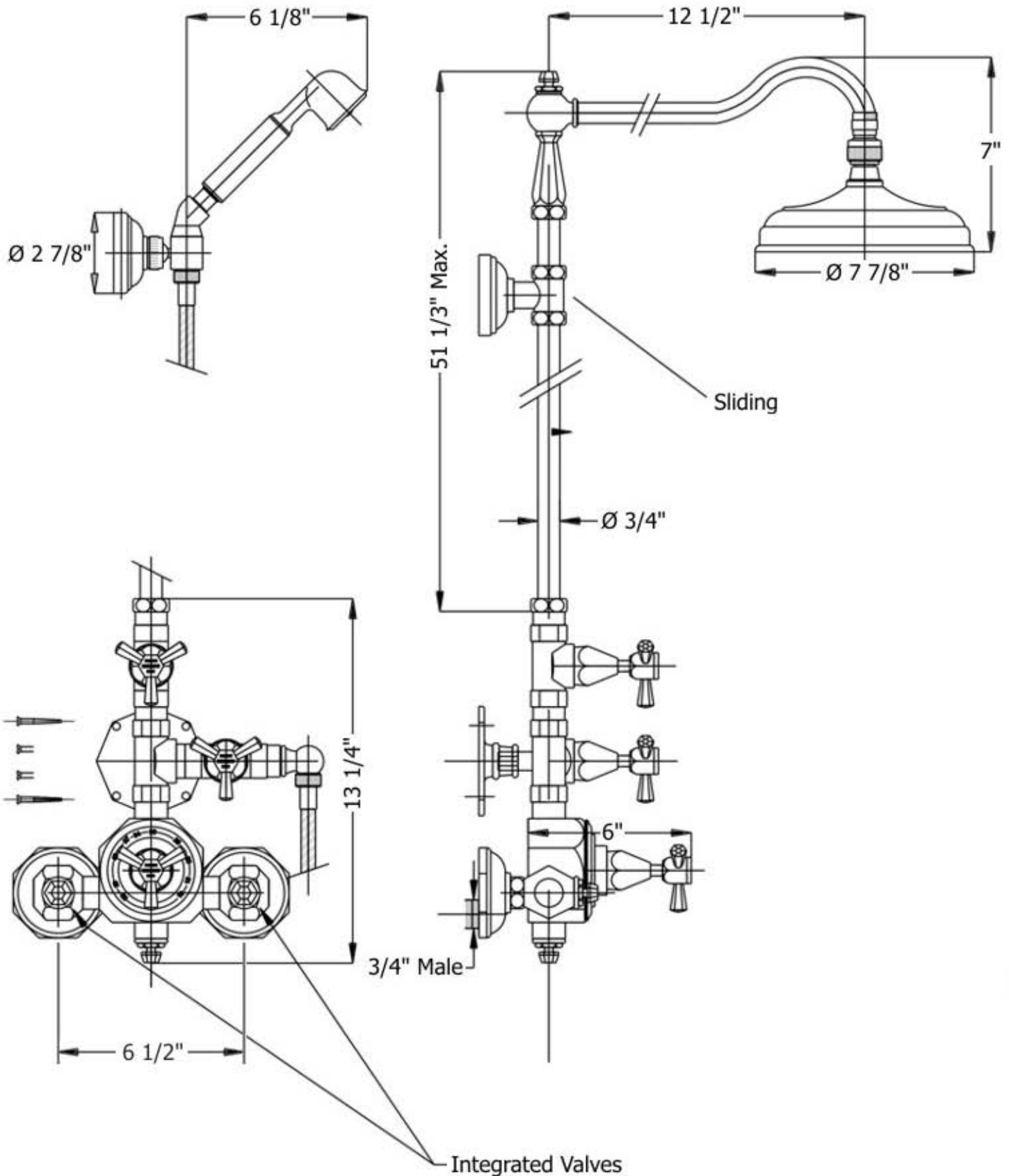
	Part#	Description
	66	Hand Spray Elbow
	67	Conical Coupler
	67-79	5' Complete H/S Hose
	68-72	Hand Spray Wall Mount Elbow
	73	Ball Cup For Hand Spray Holder
	74	Coil
	75	Set Screw
	76	Ball Joint
	77	3/8" – 1/2" Connector
	78	Connection F/Escutcheon
	80	Integral Stop
	81	Integral Stop Cap
	82	Brass Washer

Please follow example when ordering parts for 'Monarque' Exposed Thermostatic Shower

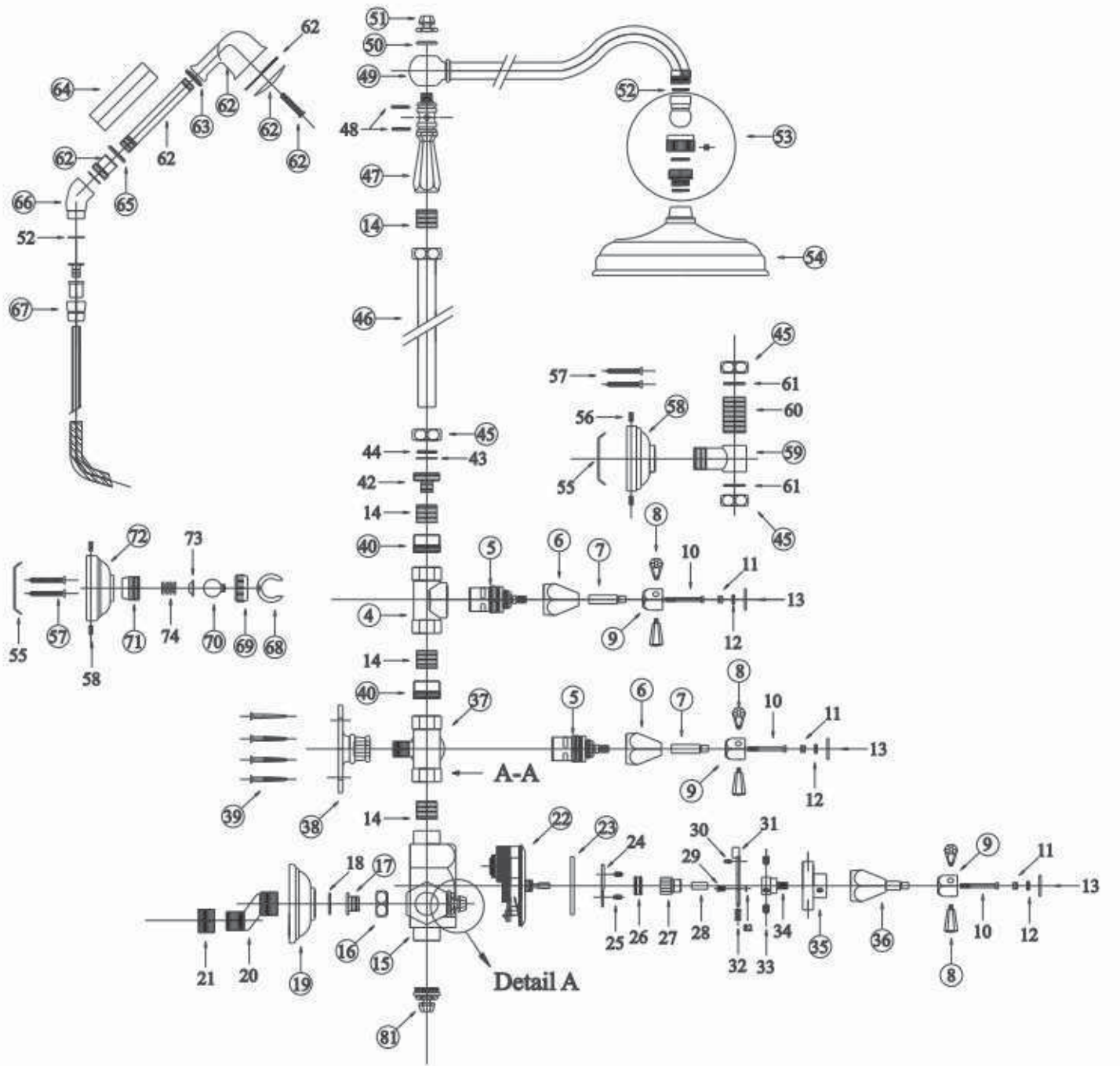
- To order part #06 – Monarque Cartridge Dome
 - 9370206 xx
- Please substitute finish number needed in place of xx.
- To order a part that is not finished use 00



3702 - 'Monarque' Exposed Thermostatic Shower



3702 - 'Monarque' Exposed Thermostatic Shower



Detail A

Détail d'une vanne d'arrêt

