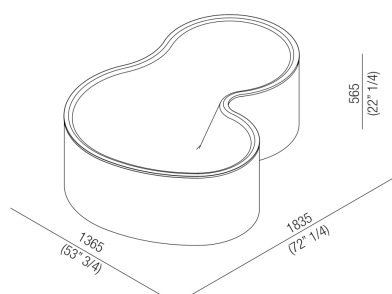




Bathtubs DR
AVAS1090Z

Studio Mk27, Marcio Kogan, Mariana
Ruzante, 2014

Bathtub



Finishes

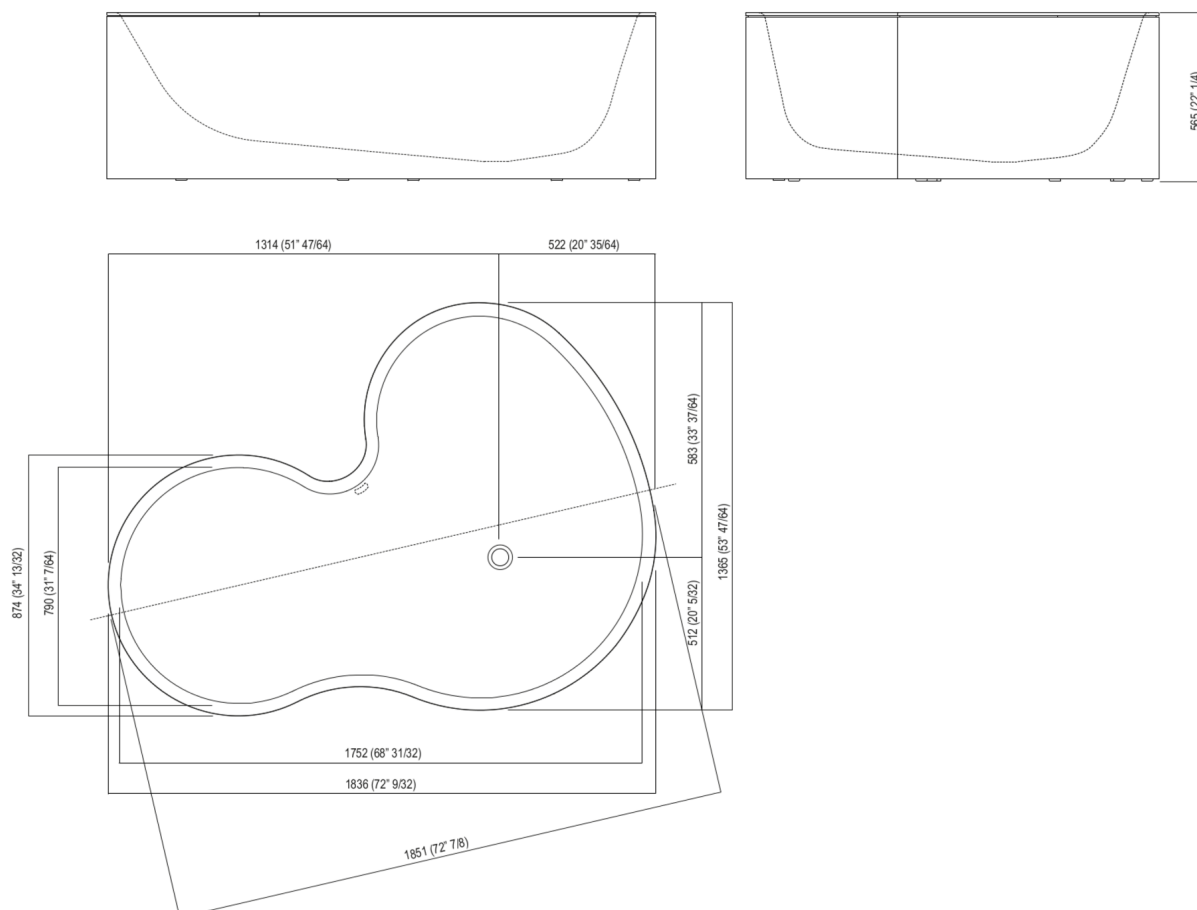


Bathtub in white Solid surface with outer structure in poplar plywood with natural oak, brown oak, dark oak, teak finish or soft touch lacquered in white, light grey (RAL7044) or dark grey (RAL7021). Also available with exterior cladded with unfired clay in light grey, dark grey, slate grey or with finishes chosen by the client. With built-in overflow, without tap holes; taps can be installed on wall or floor. Water supply also possible from the inside of the bathtub thanks to a hole equipped with polished stainless steel ring. Chromed waste trap included .MET870. Also available with rough outer structure for customization. For easier installation we recommend to use the template for the positioning of the waste trap AKITPZVAS. The bathtub is irregular in shape and therefore supplied with template. For proper positioning of the bathtub and systems the template can be ordered beforehand (.IMB1876).
Materials used: Solid Surface, Wood.

| | | |
|-------------------------|-------------------|---------------------------------|
| Width: | 183.5 cm | 72"1/4 inches |
| Height: | 56.6 cm | 22"1/4 inches |
| Depth: | 136.5 cm | 53"3/4 inches |
| Capacity: | 400.0 l | 106 gal |
| Weight: | 85.0 kg | 187 lbs |
| Packaging measurements: | 205 x 153 x 85 cm | 80"6/8 x 60"2/8 x 33"4/8 inches |
| Weight with packaging: | 180.0 kg | 397 lbs |

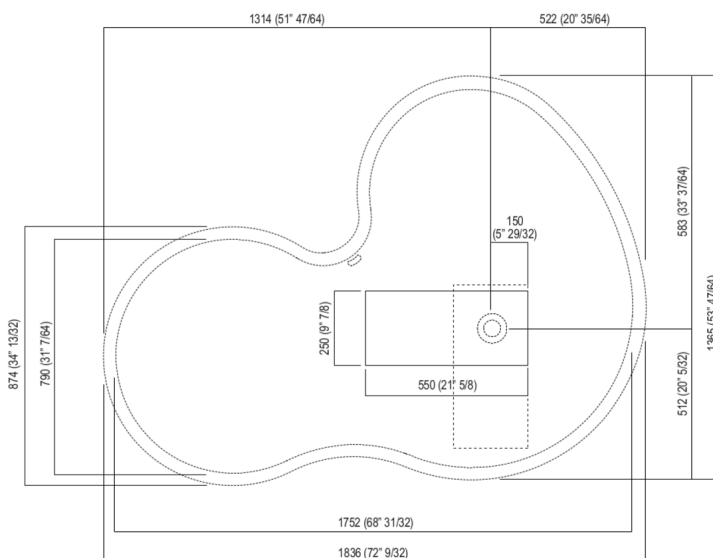


Main dimensions





Dimensions for recess

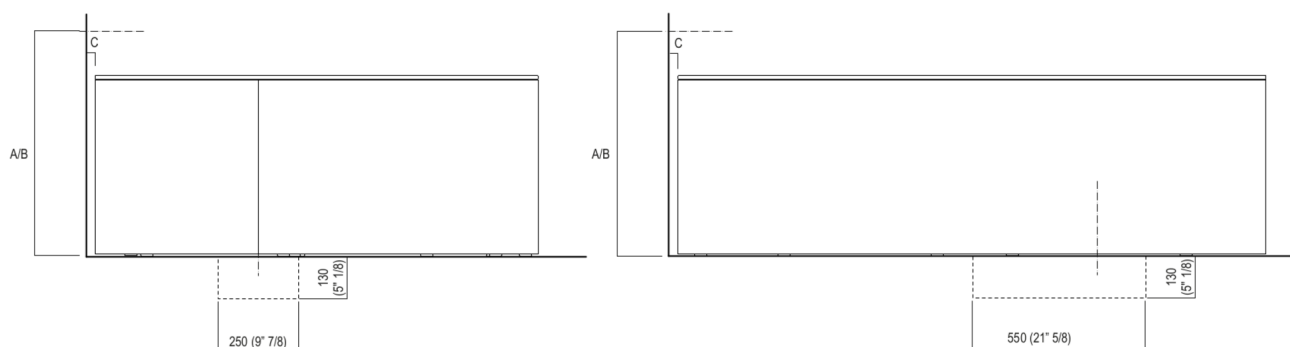


Per un corretto posizionamento del pozzetto e della rubinetteria è necessario utilizzare la dima in cartone con sagoma uguale al profilo superiore della vasca.

For a correct positioning of the recess and the tap it is necessary to use the carton template with the shape of the upper rim of the bathtub.



Dimensions for wall mounted taps



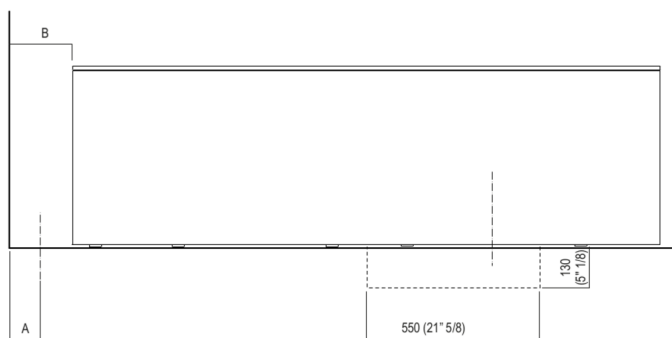
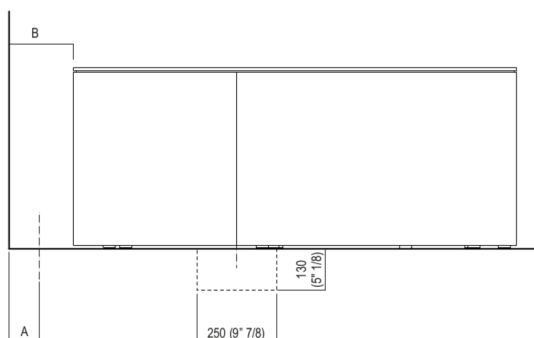
| | | | |
|--|--------------------|--------------|------------------|
| FEZ (ARUB050000L, ARUB051000L, ARUB150000C, ARUB151000C, ARUB1089S, ARUB190000C, ARUB191000C, ARUB1091S) | A* 700 (27 1/2) | B** - | C 20 (25/32") |
| MEMORY (ARUB1076S, ARUB1077S, ARUB1040S) | 700 (27 1/2) | - | 20 (25/32") |
| SQUARE (ARUB0932N, ARUB0933N, ARUB1117) | - | 700 (27 1/2) | 20 (25/32") |
| SQUARE (ARUB1118) | - | 700 (27 1/2) | 120 (4 23/32) |
| SEN (ASEN0912V) | - | 700 (27 1/2) | 20 (25/32") |

* inserasse gruppo / axial distance for tap
** filo inferiore gruppo / Tap's lower edge

Per un corretto posizionamento del pozzetto e della rubinetteria è necessario utilizzare la dima in cartone con sagoma uguale al profilo della vasca.
For a correct positioning of the recess and the tap it is necessary to use the carton template with the shape of the bathtub.



Dimensions for freestanding spouts



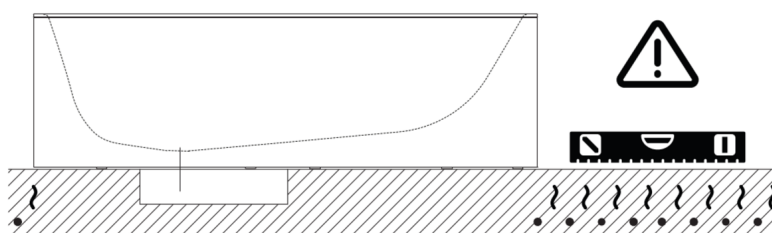
| | A | B |
|--|------------|-------------|
| FEZ (ARUB140, RAUB145, ARUB170N) | 80 (3 1/8) | 200 (7 7/8) |
| MEMORY (ARUB1078, ARUB1072, ARUB1033) | 80 (3 1/8) | 200 (7 7/8) |
| SQUARE (ARUB0961L, ARUB0934L, ARUB0935NL, ARUB0936NL, ARUB0952L, ARUB1024N, ARUB1112, ARUB1115) | 80 (3 1/8) | 165 (6 1/5) |
| SEN (ASEN0911) | 80 (3 1/8) | 165 (6 1/5) |

Per un corretto posizionamento del pozzetto e della rubinetteria è necessario utilizzare la dima in cartone con sagoma uguale al profilo superiore della vasca.

For a correct positioning of the recess and the tap it is necessary to use the carton template with the shape of the upper rim of the bathtub.



Note



La vasca deve essere installata su un pavimento perfettamente piano.
The bathtub must be positioned on a flat floor surface.

E' necessario predisporre a pavimento un pozzetto.
It is necessary to prepare a recess in the floor.

Evitare di realizzare impianti di riscaldamento nell'area sottostante la vasca.
Avoid the installation of floor heating plants in the area under the bathtub.