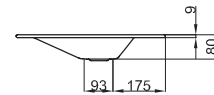
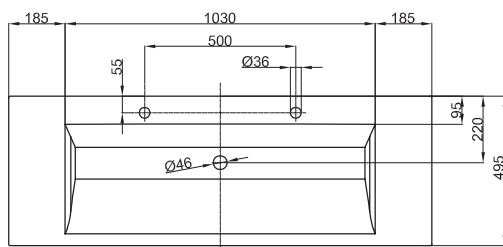


**Technical Data Sheet****BETTEAQUA BUILT-IN WASHBASIN**

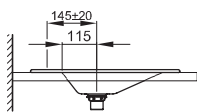
Built-in washbasin right angled, 1400 x 495 x 9 mm, enamelled, with 2 tapholes, without an overflow, incl. fastening material

Design: schmidem design

|             |  |
|-------------|--|
| article no. | A046 HLW2  |
| dimension   | 140 x 49,5 x 0,9 cm  |
| Colours     | can be delivered in white, colour range <b>BETTEFLOOR</b> and other sanitary colours |
| Extras      | available with the easy-to-clean surface <b>BETTEGLAZE® PLUS</b>                     |

**Recommended Taps**

For optimal water fall you should use spouts with vertical outlet and aerator.



spout projection:  
ca. 145 mm from centre of taphole