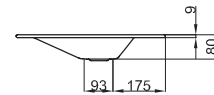
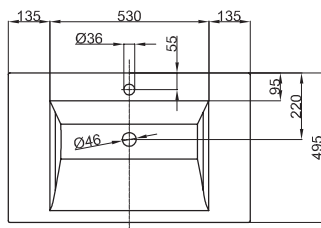


Technical Data Sheet**BETTEAQUA BUILT-IN WASHBASIN**

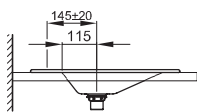
Built-in washbasin right angled, 800 x 495 x 9 mm, enamelled, with a taphole, without an overflow, incl. fastening material

Design: schmidtem design

| | |
|-------------|--|
| article no. | A048 HLW1 |
| dimension | 80 x 49,5 x 0,9 cm |
| Colours | can be delivered in white, colour range BETTEFLOOR and other sanitary colours |
| Extras | available with the easy-to-clean surface BETTEGLAZE® PLUS |

**Recommended Taps**

For optimal water fall you should use spouts with vertical outlet and aerator.



spout projection:
ca. 145 mm from centre of taphole