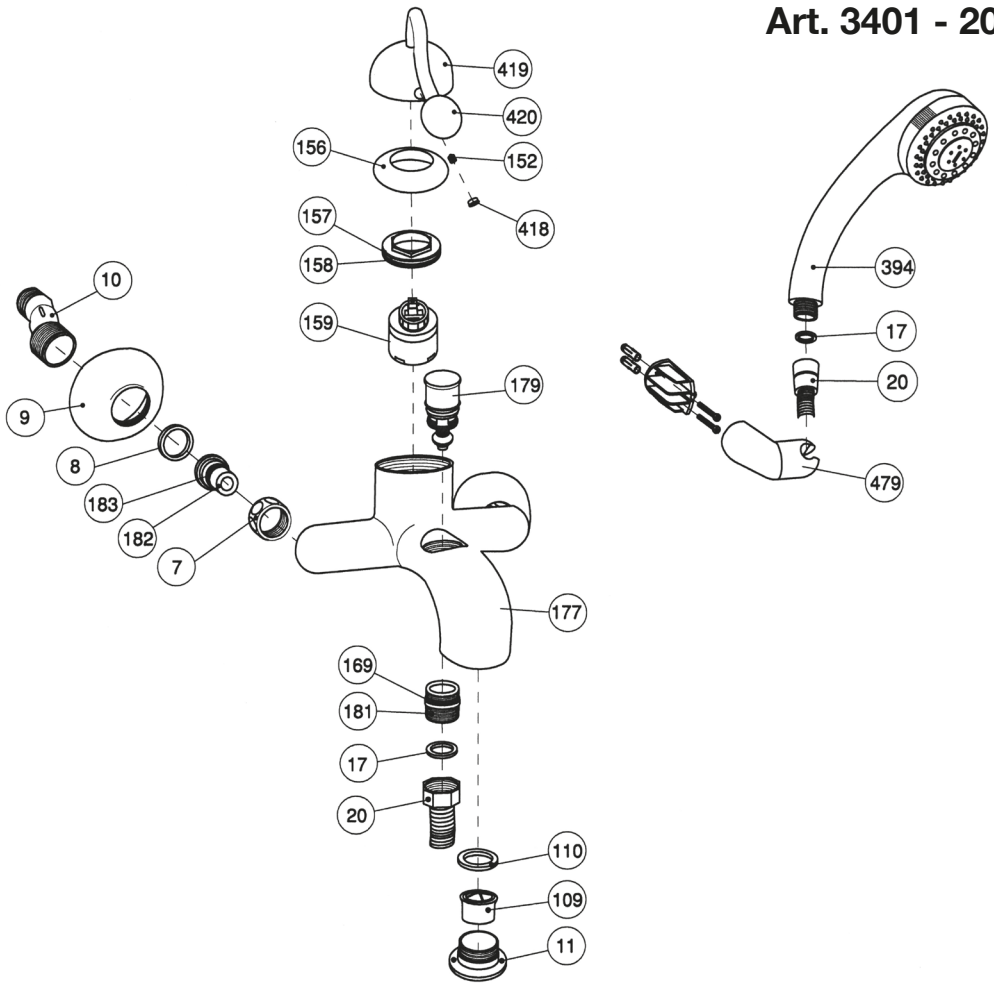


# Art. 3401 - 20



Pos.	Descrizione	Description	Cod.
7	Calotta per eccentrico G 3/4"	Nut for eccentric G 3/4"	C 7060
8	Guarnizione fibra 24x18x2	Fibre washer 24x18x2	C 7573.1
9	Cappuccio tondo per eccentrico	Round cap for eccentric	C 7212
10	Gambo eccentrico	Eccentric shank	C 7204A
11	Porta aeratore M28x1 Ø 46	Aerator holder M28x1 Ø 46	C 7087.1
17	Guarnizione fibra 18 x 12,5 x 2	Fibre washer 18 x 12,5 x 2	C 7573
20	Flessibile cm. 150 1/2" x 1/2" doppia aggraffatura	Double spiral flexible hose cm. 150 1/2" x 1/2"	C 7097
109	Aeratore 28 x 1	Aerator 28 x 1	C 7086.28
110	Guarnizione per aeratore 28 x 1	Washer for aerator 28 x 1	C 7086.28
152	Grano M6x6	Dowel M6x6	C 7554
156	Cappuccio coprihiera monocomando	Cover ring nut cap	C 7218
157	O-ring Ø 41x3	O-ring Ø 41x3	C 7586.88
158	Ghiera ferma cartuccia F 51x19W	Stop cartridge ring nut F 51x19W	C 7281
159	Cartuccia monocomando	Unilever cartridge	3009
169	O-ring Ø17.17x1.78	O-ring Ø17.17x1.78	C 7586.64
177	Corpo monocomando vasca Dufour	Single lever mixer body Dufour	C 3201/1
179	Deviatore automatico con pomolo	Automatic diverter with knob	C 7010
181	Niples attacco flex G 1/2"	Flexible hose nipples connection G 1/2"	C 7490
182	Sede mm.11.5	Seat mm. 11.5	C 7052
183	O-ring Ø16.1x1.6	O-ring Ø16.1x1.6	C 7586.61
394	Doccia idromassaggio	"Water massage" hand shower	C 7105
418	Bottoncino rosso/blu Signal	Signal red/blue plug	C 7688**
419	Leva Signal	Signal handle	C 7620
420	Oliva per leva Signal	Olive for Signal handle	C 7620/3
479	Gancio Duplex	Duplex hook	C 7131